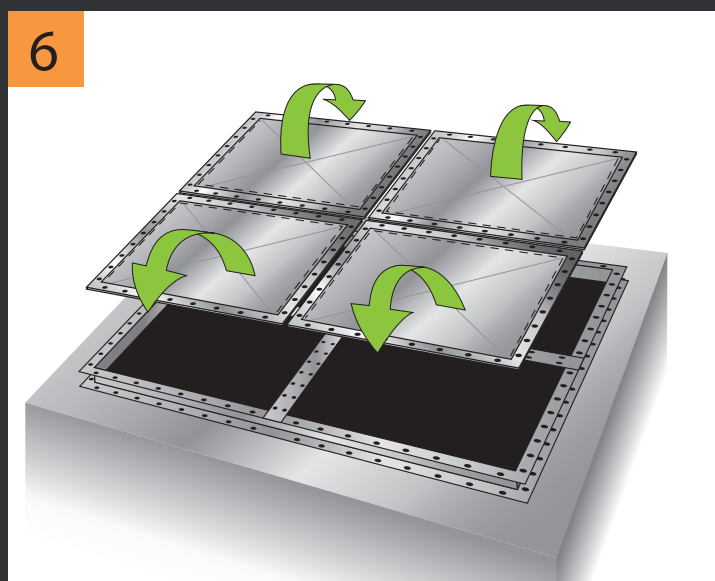
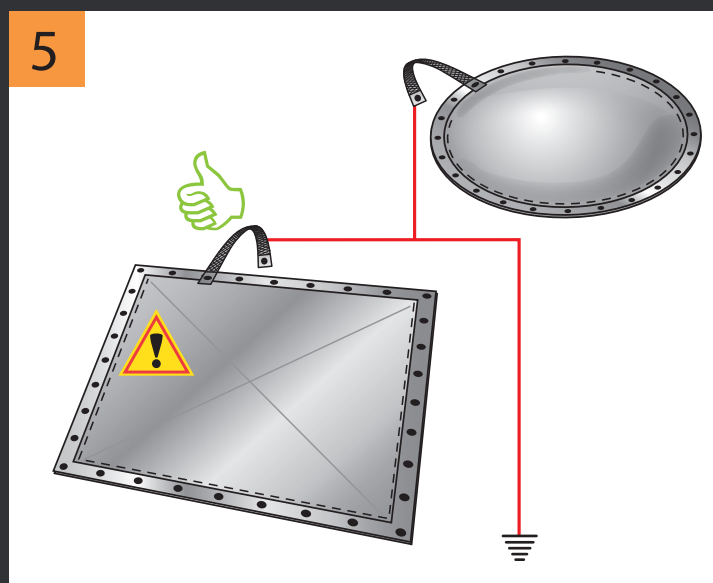
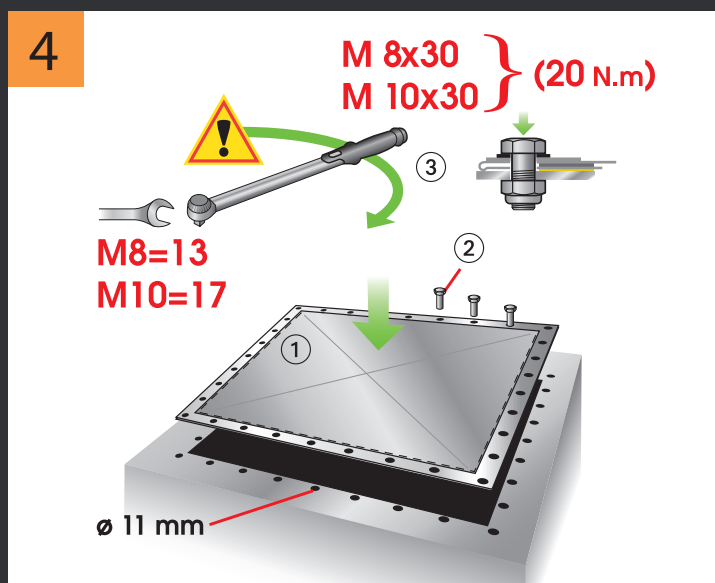
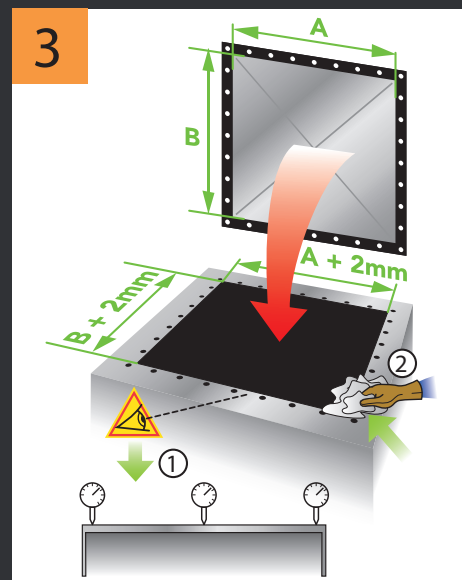
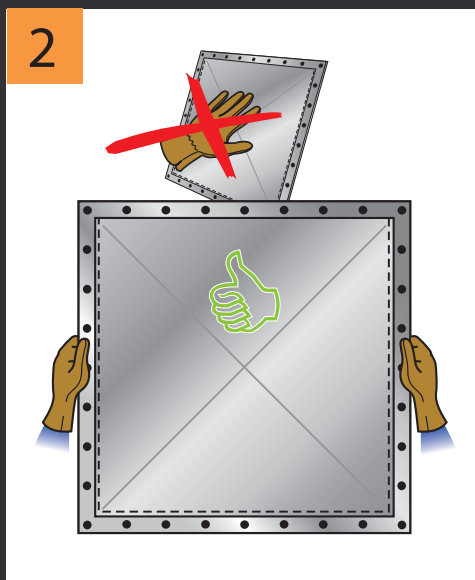


INSTALLATION GUIDE:

Explosion vent panel type VL / VD

Ex II GD



INSTALLATION GUIDE:

Explosion vent panel type VL / VD



The equipment in the ATEX area must be operated only by staff qualified in the safety provisions concerning this area (EX).

- The panel must be earthed (earth braid).
- Fix the panel with the following type of bolts:
Bolt head H M8<>M10 A2 (DIN933)
Lock nut H M8<>M10 A4 (DIN985)
- Gasket characteristic: Standard black EPDM gasket (-40°...+80° C°) — In option silicon FDA gasket (-60°...+200° C°).
- It is advisable to install a safety grid (against falling) for the large horizontally-placed panels (e.g. silo roof).
- The range of VIGILEX ® (protection system) panels complies with directive 2014/34/EU "ATEX".
- The respect of the Essential Health and Safety Requirements is ensured by compliance with:
EN14491 / 2012 **EN14797 / 2006** **EN14994 / 2007**
- The value of Kg max or Kst max are mutually dependent of the minimum volume(V) of the appliance to be protected (see cubic law G or D). For example with " D " dust: Kst max: 500 bar.m/s - $V \geq 1\text{m}^3$.
 - The upper speed limit of pressure raising dp/dt max " D " dust is 500bar/s for a $(D_h) \leq 1,2$ or 300 bar/s for $1,2 > (D_h) \leq 1,5$.
 - The upper speed limit of pressure raising dp/dt max " G " gas is 130bar/s for a $(D_h) \leq 1,2$ or 50 bar/s for $1,2 > (D_h) \leq 1,5$.
- Make a periodical inspection visit (inspection frequency to be defined depending on the site conditions), to isolate and problem on the panel caused by the disturbances of the installation to secure (vibration, etc.) or by external influences. During this visit, dust build-up should be cleaned with care.
- The explosion discharge should not be operated with products or compounds considered as toxic, corrosive, irritating, carcinogenic, teratogenic, or mutagenic are liberated. Gas, dust as well as combustion products are liable to expose the immediate environment to this type of danger. Moreover, no particle liable to constitute a danger to human health should be liberated.
- The user should make sure the VIGILEX ® panel at the end of its life is dumped properly and should give the components to specialised collection centres following their nature (stainless steel, seals, etc.).

Warning: if the explosion vent panel supplied does not have an integrated frame, a suitable frame must be installed.



SAFEVENT ApS

Mads Clausens Vej 6
9800 Hjoerring
Denmark

TEL: +45 88 63 89 00
E-MAIL: sales@safevent.dk
URL: www.safevent.dk/en